



President: Peter Yaun 0409 142 255  
peteanddanni2@gmail.com

Secretary: Denice Gilbert 0427 146 867  
denicefg@bigpond.net.au

FORMAL COMPLAINT RELATING TO  
THE DEMOLITION OF NUMINBAH FOREST PARK  
NUMINBAH VALLEY ON 5<sup>TH</sup> MAY 2020

22 July 2020  
Department of Environment and Science,

The purpose and intention of this complaint is to draw attention to the wanton demolition of a much loved and popular park without any formal community consultation in the Gold Coast Hinterland and the events leading up to this destruction.

Ultimately we, the affected communities, are calling on Premier Palaszczuk to stand the Minister responsible for this portfolio aside, subject to a thorough and detailed investigation. Minister Enoch and her public servants have continually ignored requests from the community for meetings, ignored valid and reasonable arguments to preserve this park, then without any formal consultation and in breach of their own policies, destroyed the cultural heritage and history of a rural community, part of the so called 'Green Behind the Gold.'

The people in the nearby communities and the visitors to this park have clearly stated through correspondence and a petition that they require this state Labor government to apologise for their actions, and reinstate this park.

Without any formal public or community consultation, on the 5<sup>th</sup> May 2020, despite protests and numerous requests by community organisations for meetings with Minister Enoch and/or public servants, the infrastructure of a popular park, an important part of the districts cultural heritage in Numinbah Valley, was destroyed and carted away in trucks.

Some of the correspondence relevant to this debacle is included further on in this document.

Of particular concern are the reasons for demolition, according to Minister Enoch and her public servants; Vandalism, anti social behaviour, theft, overnight camping etc. unfortunately occurs in many parks but to demolish a park for these reasons defies belief.

A simple solution as the community has suggested would have been to install a gate and surveillance cameras, a much cheaper option than demolition. The community had also received an undertaking from the nearby Numinbah Correctional Centre to provide inmates for maintenance work at the park, as they used to do in the 1980's (see below reference to Forest Park in a publication compiled by the community as a part of their bicentenary celebrations in 1988 titled "Numinbah Valley a Social and Natural History 1840's-1988)

Responses to community organisations indicate the minister appears to have been deliberately misinformed, apparently in a desperate bid to justify the bureaucratic decision:-

*"The watercourse had changed as a result of cyclone Debbie so the park was no longer popular"*  
Wrong! A solid basalt bedrock and stream banks so no change to the swimming hole!  
*No longer popular?* A traffic counter halfway along the entry track did not count the cars parked along the track or the road verges outside the park on a hot summers day.

*"A site 500 metres to the north and an alternate site 1.5 kms to the south was more popular."*  
Wrong again! These sites may only be accessed by descending dangerously steep high banks through near impenetrable vegetation.

Interesting that when the validity of these comments were questioned the bureaucrats failed to mention them in future correspondence. Do these responses constitute the deplorable behaviour from public servants Premier Palaszczuk is referring to below?

A quote attributed to Premier Ms Palaszczuk, Friday 3<sup>rd</sup> July in relation to the Jackie Trad issue:-

*"I'm not happy and frankly it is a very serious issue when you have public servants who have misled the Premier and the minister of the day," Ms Palaszczuk said.  
"It's a good wake-up call for everyone in the way in which they conduct themselves."*

To summarise the issue the public servants have demolished a much-loved and popular park allegedly because of vandalism, theft and anti-social behaviour. The cultural heritage in this park has been destroyed. What we now have is still vandalism, theft and anti-social behaviour but no historic shelter shed, no picnic tables, no BBQ'S, and most importantly no toilet facilities, so now patrons have no choice but to toilet on the banks of the Nerang River, 500 metres from the high water mark of the Hinze Dam, a dam which supplies much of South East Queensland's drinking water!

Surely the more cost effective option would have been to retain the existing infrastructure, place a gate at the entrance and surveillance cameras onsite rather than destroy a popular recreational park?

Suggestions by Minister Enoch and other public servants that swimming access at nearby Bochow Park was an alternative option once again completely ignores community advice that Bochow Park was already saturated with visitors.

The photograph below was taken on the 31<sup>st</sup> May and clearly demonstrates this community advice is correct. Cars parked on the road verges is unprecedented for this time of year and is obviously the overflow from the demolished Forest Park.



Of particular concern is the picture below where a NP sign on the track into Forest Park proudly claims they are “Protecting our natural and cultural heritage.”



**The minister and her public servants are clearly in breach of their own policy!**

The highly regarded Cultural Heritage of the affected communities has been absolutely trashed with no respect for community feelings or opinions, in fact every request for an audience with the minister or her public servants has either been declined or ignored.

We are calling on the minister to stand aside subject to an inquiry into this matter, especially into the actions of the public servants involved. Ultimately we are calling on the Minister and Premier Palaszczuk to reinstate this park for the benefit of everyone who lives in or visits the so called “Green Behind the Gold.”

Sincerely yours,

Peter Yaun  
President  
Communities for Sustainable Futures  
McPherson Ranges Group Inc.

## Forest Park

This delightful rest stop for travellers, and picturesque picnic destination for visitors and locals was developed as a recreation area in 1978. The facilities were constructed by the Department of Forestry and large scale repairs or additions are carried out by the Foresters, however for many years the National Parks staff based at Natural Arch, maintained these facilities on a weekly basis. This situation continued for many years until the task was contracted out to private operators. At present the H.M. State Farm has the maintenance contract.

Forest Park is a popular swimming spot with locals and visitors who have discovered the unique pleasures of a refreshing dip in a mountain stream. The deep pool and rope swing provide hours of fun. The Nerang River glides through graciously defining the boundary of the recreational area. Tumbling rapids upstream, the wide, clear pool; numerous red flowering bottlebrush (*Callistemon viminalis*) and drooping grey-green river oaks (*Casuarina*) all combine to create a picture of charm and serenity.

Platypus have been observed here during the calming times of dusk and dawn. Lace monitors, the large goannas that frequent the picnic area are popular with visitors along with the familiar kookaburra and the noisy currawongs. Sadly they have become the "junk food generation" of their species by supplementing their diet with too much of man's leftovers. Over the past ten years, the Forest Park has taken a lot of pressure off the heavily visited Natural Arch National Park, and is a welcome addition to the facilities provided for nature-based recreation in Numinbah Valley.

## Future Plans

The value of the area as a recreation resource is being recognised as the management for the future. Plans presently on the drawing board include walking trails and camp sites within the area near Page's Pinnacle. This would provide a link between the Numinbah State Forest and the Springbrook Plateau for the purposes of overnight bush camping, and more strenuous day walks. The State Forests also act as valuable corridors providing food and shelter for the wildlife in the Numinbah Valley and Springbrook area.



LACE MONITOR

## The Old Camp and Recollections

The old Forestry camp that was situated near the Pine Creek bridge originally consisted of two houses, a barracks, worksheds and a nursery. Built in the late thirties, it housed the two families of the overseer and the foreman, as well as an average of six men. They were engaged in cutting and burning fire breaks to protect the young timber, thinning the forests and ringbarking the old trees to enable more vigorous growth in the remaining trees.

In the late forties, under the guidance of overseer Mick Fraser, they planted an area of Flooded Gum on either side of Connells Creek (now Waterfall Ck.) and a plantation of mixed hardwoods, including Tallowwood,



The picnic area at Numinbah State Forest Park, looking from the walking track that leads down to the river.

Flooded Gum and Ironbark, in the Wunburra area. In five years the Flooded Gums had grown 25 ft. It was the overseer's responsibility to mark and measure each tree that was to be logged. After the trees were marked and the royalty on each log arrived at, the contractors moved in to fall them. Brandons and Johnson & Freeman of Southport, were the major contractors. Turpentine was taken from near the Hall and the other hardwoods, Ironbark, Bloodwood and Tallowwood were logged throughout the State Forests. In the sixties, as many as fourteen men were employed to plant the Pine plantation on S.F.702, near Tony's Creek on the western side of the valley. The men were kept busy thinning and replanting as the Red-necked Wallabies were fond of the tender pine seedlings.

At this time the overseer, Donald Duk (we kid you not), started up a nursery to grow eucalypts for the Numinbah plantations as well as supplying other areas with seed. Ted Stephens remembers the method used when he worked for the Forestry Service as it was then known. A suitable tree was marked because of its type and the quantity of seed that it carried — it was felled and the gumnuts gathered. The seed would then be removed and after being shaken free of dust, it was laid out in the sun. Later, the seed was planted into two inch tubes to await germination.

Les McGregor, who worked with Forestry in the late forties, recalls that most of the workers were local men from the Numinbah and Advancetown districts. Men such as Dan and Hugh Guinea, Charlie Lentz, and Wattie Veivers. Dan Guinea became overseer for a time and received a big send-off in Nerang upon his retirement.

In 1949 the Forestry Service decided to re-open the Numinbah-Springbrook road, as it had been closed to traffic for years after a "big wet" had turned it into a watercourse. The narrow section just below Wunburra was blasted clear of rock and debris. A wooden bridge built from round timber was laid down to facilitate access to the higher parts of the State Forest and to give the residents of Springbrook an alternative route. The temporary wooden bridge was replaced by a concrete section in 1960.

Ray Hinde became overseer after Donald Duk was transferred on promotion. Ray was fatally injured while on the job in the early seventies. Apparently he had cut his hand on an axe and gone to town for assistance,

The document below is a media article in response to the appalling destruction of a wonderful asset.



President: Peter Yaun 0409142255  
peteanddanni2@gmail.com

Secretary: Denice Gilbert 0427146867  
denicefg@bigpond.net.au

**Re Numinbah Forest Park:**

13<sup>th</sup> May 2020

On the 5<sup>th</sup> May 2020, a much-loved park in Numinbah Valley was destroyed by bulldozers and removed as rubble in the back of trucks.

So too was a huge part of our cultural heritage destroyed, stolen from not only the Numinbah Valley community but also stolen from every single person who has ever enjoyed and visited this park.

These buildings were constructed by the then State Forestry rangers 42 years ago from stone, mortar and timber sourced from the local area and constructed in such a skilful fashion that the buildings structural integrity remained intact, in fact their skill and the ambience of the buildings were admired and enjoyed by many visitors until these buildings were violently torn apart by bulldozers and dumped into trucks.

I am reliably informed that National Parks bureaucrats felt they had no other option than to cut some assets as they have neither funding or the staff to maintain their existing infrastructure so Numinbah Forest Park became one of these casualties, but this is not an excuse for no formal consultation with community, not even the contract cleaner was informed. We can only surmise they were hell bent on demolishing this place before anyone was aware of their intentions. Well, they almost got away with it except for a small band of local and Springbrook residents who managed to block the entrance track until media arrived.

Prior to this atrocity, as a response to rumours circulating regarding the demise of the park, the CSF organisation had begun lobbying the state government to retain the park in its entirety. The responses defied belief. It appears the minister has been deliberately misinformed apparently in a desperate bid to justify the bureaucratic decision.

*“The watercourse had changed as a result of cyclone Debbie so the park was no longer popular”* Wrong! A solid basalt bedrock and stream banks! A traffic counter halfway along the entry track did not count the cars parked along the track or the road verges outside the park on a hot summers day.

*“A site 500 metres to the north and an alternate site 1.5 klms to the south was more popular.”* Wrong again! These sites may only be accessed by descending steep high banks through near impenetrable vegetation. When this was pointed out the bureaucrats failed to mention this again.

*“Vandalism, theft and anti-social behaviour were cited as reasons for demolition”*-does that mean if someone damages your house you demolish it to prevent this happening again? Unfortunately, this type of behaviour is reflected in other areas and other parks but the common-sense response should have been to protect it with gates and surveillance cameras. Hinze Dam boat ramps and Bochow Park to the south are protected by gates which are operated by security personnel who drive past Forest Park each and every morning and afternoon.

Surely installation of gates and surveillance cameras would have been a cheaper and more sensible option than demolition?

Another casualty of this despicable exercise could well be the cohesive respectful relationship built over many years between the National Parks staff and community in aspects of firefighting and pest management. Only last August and September the Numinbah Valley and Springbrook Rural Fire Brigades worked in an unpaid capacity alongside Parks and Seqwater crews and succeeded in preventing these fires from burning

across Numinbah Valley then up into the Springbrook National Parks. So, demolishing one of our community parks is how our glorious state government demonstrates their appreciation. I fear there may now be problems motivating volunteer community Rural Fire Brigade members to continue this relationship.

There already is too much pressure on nearby Springbrook infrastructure with parking and parks over capacity. Residents are angry that they are often blocked from accessing their homes and business owner's carparks are filled by visitor's vehicles while they patronise the walking tracks. The demolition of Numinbah Forest Park will only exacerbate this situation with more visitors heading to Springbrook.

There are serious concerns in Numinbah Valley that closure of Forest Park will put more pressure on the City of Gold Coast owned Bochow Park and the community owned Numinbah Valley School of Arts Hall and grounds where we already have major issues with bushwalkers etc. parking the venue out, as happened again for their monthly markets held on the first Sunday of every month. There have been many occasions when residents and people who have hired the hall couldn't even access the front steps and ramp.

The Hinze Dam Stage 3 is considered by many as a failure as far as recreational opportunities are concerned, despite the best efforts of two community representatives as members of the HDS3 Community Advisory Committee urging them to replicate the wonderful recreational area that stage 2 had provided. What we have there now is virtually a sterile concrete and steel area.

The bottom line is that with the population increase we are suffering on the Gold Coast, there will be ever increasing pressure on recreational areas in the Hinterland so why do they destroy the so-called "Green Behind the Gold"?

As a concession to an enraged community, it appears there has been an undertaking to leave access open to this area but with no toilet amenities where are all these visitors going to toilet? Yes, along the riverbanks and the Hinze Dam high water mark just 500 metres downstream! No thought or common sense applied here.

By now almost everyone would be aware there has been a petition on change.org 'Save Forest Park' calling on the minister to halt the demolition but as this has been ignored the petition is now calling on the minister to reinstate this park. Although our cultural heritage and the scenic amenity of this park is gone forever there is still a desperate shortage of recreational opportunities in the area and this park needs to be reinstated. Please jump onto this petition, sign it and leave your comments. Search State Forest Park or Danni Yaun on facebook.

At the time of writing this column there are 3276 signatures and 1057 petition shares and rising rapidly.

The next step is for all the local community groups to unite and call on the Queensland Premier to stand this inept minister aside pending an inquiry into this debacle. Bureaucrats who have pushed for this result need to be held accountable.

Although this park is in the Mudgeeraba electorate, the vast majority of petitioners reside in other nearby electorates so unless there is a positive response, it is the intention to target these electorates prior to the October state election, particularly the relevant minister Leeanne Enoch's electorate of Algester.

Sincerely yours,

Peter Yaun  
President  
Communities for Sustainable Futures  
McPherson Ranges Group Inc.

This front-page editorial of our local paper, Springbrook Voices is a true reflection of community feeling.

# Springbrook Voices

Issue 131

Our Community Newspaper

May '20 - Aug '20

## SHORTSIGHTED AND SHAMEFUL ...a loss to all



Like thieves in the night, the recent early morning demolition of the much loved Forest Park recreational facility in Numinbah Valley has scarred the local communities' relationship with the QPWS. It was an underhanded and aggressive solution to a situation that had many other alternative solutions. It was an ill thought out decision that did not include any consultation with the community and as a result was offensive and arrogant.

That facility had been part of the valley recreational offering for the past 42 years and it was very, very popular with locals and visitors alike. (*irrespective of what the Minister was allegedly told – See Peter Yaun's CSF article in this issue*) Not only was it a pretty, secluded setting beside the Nerang River offering an opportunity to picnic, bbq, birdwatch and swim, it took considerable pressure off the other two facilities in the valley, notably council operated Bochow park and Natural Bridge section of Springbrook NP.

After the closure of swimming at Natural Bridge due to the impact on the food source for the glow worm population and the number of accidents that had occurred, Forest Park provided a much safer and popular alternative swimming location. Clearly to help the hinterland national parks cope with the increased pressure of people we need more locations like Forest Park not less.

It has been argued that the costs of vandalism and the need for a new toilet block precipitated the decision – that is not being disputed as it is a problem in many recreation areas but that is not the point otherwise we would remove all public area facilities that are occasionally damaged. This is evidence of crisis not creative management. Creative ideas were needed to find a solution but the capacity for this was clearly not demonstrated. Now we have a situation where the road into the park remains open but there are no facilities so people will pollute the water and the soil. We all know that the park is adjacent to the Nerang River which feeds in a couple of kilometres directly into the Hinze Dam, the Gold Coast main water supply. Was there any consultation with SEQ Water about this situation? Couldn't the agencies have come up with a better solution? Clearly this is an example of worst case instead of best case management on behalf of all parties concerned.

Our natural hinterland areas, identified and loudly touted by politicians and promoters alike as the precious *Green behind the Gold*, are not being adequately protected nor are they being funded in order to be managed for the greater good. Despite bringing millions of dollars into the economy, the natural recreation areas are being ignored and critically underfunded. We all know that these natural spaces are becoming more and more sought after and are experiencing increasing pressure from visitation. So this response to a lack of funds and staff to manage the Forest Park facility smacks of being a cynical exercise to simply solve a short term problem, irrespective of the long term consequences. It was an extremely short sighted decision to destroy such a valuable asset as the Numinbah Forest Park. Shame on you QPWS, you have very badly damaged the goodwill that had built up between the service and the communities of Springbrook and Numinbah over the past 40 years. It will not be easy to regain any respect or co-operation after such a poorly carried out and brutal disregard for the history, rights and views of the local communities. Although both Springbrook and Numinbah residents protested about the destruction without success, they are not about to give up on having these facilities reinstated. ( See other articles throughout this issue to find out how to get involved and add your voice. )

Pam Hall

## Copies of emails to Ministers.

**From:** [peteanddanni2@gmail.com](mailto:peteanddanni2@gmail.com)

**Sent:** Friday, 13 March 2020 3:24 PM

**To:** [tourism@ministerial.qld.gov.au](mailto:tourism@ministerial.qld.gov.au); [cooper@parliament.qld.gov.au](mailto:cooper@parliament.qld.gov.au);  
[environment@ministerial.qld.gov.au](mailto:environment@ministerial.qld.gov.au); [innovation@ministerial.qld.gov.au](mailto:innovation@ministerial.qld.gov.au)

**Cc:** 'Peter Yaun' <[peteanddanni2@gmail.com](mailto:peteanddanni2@gmail.com)>

**Subject:** Numinbah Forest Park impending closure

The Honourable Leeanne Enoch,  
Minister for Environment.

The Honourable Kate Jones,  
Minister for Tourism,

Dear Leeanne & Kate,

Please see attached document detailing the concerns of residents in the southern Gold Coast Hinterland regarding the impending closure of a popular and much loved park in Numinbah Valley.

Sincerely yours,

Peter Yaun (President, Communities for Sustainable Futures)



President: Peter Yaun 0409142255  
[peteanddanni2@gmail.com](mailto:peteanddanni2@gmail.com)

Secretary: Denice Gilbert 0427146867  
[denicefg@bigpond.net.au](mailto:denicefg@bigpond.net.au)

12<sup>th</sup> March, 2020  
The Honourable Leeanne Enoch,  
Minister for Environment.

The Honourable Kate Jones,  
Minister for Tourism.

Re Numinbah Forest Park closure:

Dear Kate and Leeanne,

I write to inform you of the widespread community concern regarding the impending closure of Numinbah Forest Park in Numinbah Valley. The opposition to this intended closure appears to be unanimous. Community groups and residents in Numinbah Valley,



Natural Bridge and Springbrook, including the Springbrook Greens, are very concerned they may be losing a valuable recreational destination. There is a very strong determination by these residents to ensure they will not be deprived of this asset.

I would assume the many day trippers who visit this park from the Gold Coast and other areas would be equally concerned.

There is a desperate shortage of recreational parkland in the southern Gold Coast Hinterland.

Sited along the Nerang-Murwillumbah Road between Nerang and the New South Wales border, Numinbah Forest Park is one of only two parks with river access. This area is an integral part of what has been marketed by tourism bodies for many years as 'The Green Behind the Gold.'

As the name suggests, Nerang-Murwillumbah Road runs from Nerang and the Gold Coast through to Murwillumbah and the Northern Rivers and is a hugely popular tourist drive.

One of these two parks is Bochow Park which is City of Gold Coast owned and maintained. This land was originally donated for recreational parkland by a pioneering family.

Bochow Park is nearly always over capacity during at least the summer months with vehicles parked along the road verges in both directions.

Numinbah Forest Park and Bochow Park have similar recreational opportunities with BBQ's, covered picnic area and best of all, access to a swimming hole in the Nerang River.

Numinbah Forest Park until very recently was sited on Main Roads tenure but maintained by National Parks. I am reliably informed the tenure has recently changed to National Parks.

I am also reliably informed that National Parks staff felt they had no other option than to cut some assets as they have neither funding or the staff to maintain their existing infrastructure so Numinbah Forest Park became one of these casualties.

There already is too much pressure on nearby Springbrook infrastructure with parking and parks over capacity. Residents are angry that they are often blocked from accessing their homes and business owner's carparks are filled by visitor's vehicles while they patronise the walking tracks. Closure of Numinbah Forest Park will only exacerbate this situation with more visitors heading to Springbrook.

There are serious concerns in Numinbah Valley that closure of Forest Park will put more pressure on the community owned Numinbah Valley School of Arts Hall and grounds where we already have major issues with bushwalkers etc. parking the venue out, as happened again for their monthly markets held on the first Sunday of every month. There have been many occasions when local residents and people who have hired the hall couldn't even access the front steps and ramp.

The Hinze Dam Stage 3 is considered by many as a failure as far as recreational opportunities are concerned, despite the best efforts of two community representatives as members of the HDS3 Community Advisory Committee urging them to replicate the wonderful recreational area that stage 2 had provided. What we have there now is virtually a sterile concrete and steel area.

The bottom line is that with the population increase we are suffering on the Gold Coast, there will be ever increasing pressure on recreational areas in the Hinterland.

I am writing on behalf of these affected residents to urge you to take up this matter.  
**Apparently tenders are now being called for demolition of this park so intervention is urgent.**

Ultimately, we believe that instead of closing the park, it should be upgraded to facilitate more visitors while making the park more maintenance friendly. I am calling on you, as a Minister in the Palaszczuk government, to address this situation and ensure that Numinbah Forest Park not only remains open for visitors but is upgraded to ensure enhanced viability for both visitors and maintenance.

Thank you for your consideration,

Kind regards,

Peter Yaun  
President  
Communities for Sustainable Futures  
McPherson Ranges Group Inc.



President: Peter Yaun 0409142255  
peteanddanni2@gmail.com

Secretary: Denice Gilbert 0427146867  
denicefg@bigpond.net.au

12<sup>th</sup> March, 2020

The Honourable Ros Bates,  
Member for Mudgeeraba.

Re Numinbah Forest Park closure:

Dear Ros,

I write to inform you of the widespread community concern regarding the impending closure of Numinbah Forest Park in Numinbah Valley. The opposition to this intended closure appears to be unanimous. Community groups and residents in Numinbah Valley, Natural Bridge and Springbrook, including the Springbrook Greens, are very concerned they may be losing a valuable recreational destination.

I would assume the many day trippers who visit this park from the Gold Coast and other areas would be equally concerned.

There is a desperate shortage of recreational parkland in the southern Gold Coast Hinterland. Between Nerang and the New South Wales border along the Nerang-Murwillumbah Road, Numinbah Forest Park is one of only two parks with river access.

One of these parks is Bochow Park which is City of Gold Coast owned and maintained. Bochow Park is nearly always over capacity during at least the summer months with vehicles parked along the road verges in both directions.

Numinbah Forest Park and Bochow Park have similar recreational opportunities with BBQ's, covered picnic area and best of all, access to a swimming hole in the Nerang River.

Numinbah Forest Park until very recently was sited on Main Roads tenure but maintained by National Parks. I am reliably informed the tenure has recently changed to National Parks.

There already is too much pressure on Springbrook infrastructure with parking and parks over capacity. Residents are angry that they are often blocked from accessing their homes and business owners carparks are filled by visitors vehicles while they patronise the walking tracks. Closure of Numinbah Forest Park will only exacerbate this situation with more visitors heading to Springbrook.

There are serious concerns in Numinbah Valley that closure of Forest Park will put more pressure on the Numinbah Hall grounds where we already have major issues with bushwalkers etc. parking the venue out, as happened again for their monthly markets held on the first Sunday of every month. There have been many occasions when local residents and people who have hired the hall recall couldn't even access the front steps and ramp.

The Hinze Dam Stage 3 is considered by many as a failure as far as recreational opportunities are concerned, despite the best efforts of two community representatives as members of the HDS3 Community Advisory Committee urging them to replicate the wonderful recreational area that stage 2 had provided. What we have there now is virtually a sterile concrete and steel area.

The bottom line is that with the population increase we are suffering on the Gold Coast, there will be increasing pressure on recreational areas in the Hinterland.

I am writing on behalf of these affected residents to urge you to take up this matter with the relevant Palaszczuk government ministers. **Apparently tenders are now being called for demolition of this park so intervention is urgent.**

Ultimately we believe that instead of closing the park, it should be upgraded to facilitate more visitors while making the park more maintenance friendly.

Thank you for your consideration Ros,

Kind regards,

Peter Yaun. (President, Communities for Sustainable Futures.)

---

### **Summary of a phone call to QPWS.**

Peter Yaun phoned Sergio Norambuena at 9.34am, 12<sup>th</sup> March. An ensuing 25-minute phone conversation failed to convince Sergio of the community sentiment regarding the impending destruction. A request to meet community representatives was declined and Sergio's justification of the demolition was a lack of funding for National Parks from the state government for staff and infrastructure maintenance. A quote from Sergio:- "We have more toilets than staff"

### **Follow up email to QPWS.**

**From:** [peteanddanni2@gmail.com](mailto:peteanddanni2@gmail.com)

**Sent:** Friday, 13 March 2020 5:12 PM

**To:** [sergio.norambuena@des.qld.gov.au](mailto:sergio.norambuena@des.qld.gov.au); [Miles.Pritchett@npsr.qld.gov.au](mailto:Miles.Pritchett@npsr.qld.gov.au)

**Subject:** Numinbah Forest Park impending closure

Good afternoon Sergio,

For your information, please see the attached letter to the relevant Ministers.

I am extremely alarmed that demolition work has apparently started at Numinbah Forest Park. I am informed this afternoon that the signage has been removed from the entrance. There is a lot of anger and concern in our Hinterland communities concerning this closure and you can be assured that there are some very determined community groups and individual residents who do not wish this park to be closed.

There are already suggestions that media be approached to promote our cause but that has never been my early personal reaction.

I do thank you for taking the time yesterday to speak to me by phone about the situation.

Kind regards,  
Peter Yaun.

# **Springbrook Mountain Community Association**

**PO Box 677, MUDGEERABA QLD, 4213**

*The Honourable Leeanne Enoch MP*

*Minister for Environment*

14<sup>th</sup> March, 2020

Dear Ms Enoch,

I am writing to express the concern of members of the Springbrook Mountain Community Association, as well as a significant number of local residents, in respect of the imminent closure of the Numinbah Forest Park in Numinbah Valley.

This facility has provided generations of families from the Hinterland and the Gold Coast, as well as thousands of tourists, with a peaceful recreational facility that allows access to the Nerang River in a perfect bush setting. There is safe access from the busy tourist route of the Nerang- Murwillumbah Road and it offers welcome respite for hassled city dwellers and weary travellers.

Both Numinbah Valley and Springbrook are experiencing difficulty in catering for the ever increasing number of visitors who are anxious to experience the pleasures of this World Heritage area. Last year we wrote to you in respect of traffic management issues occurring on the access roads to the Purlingbrook National Park. These are yet to be resolved, and, in fact, are likely to be further exacerbated by the closure of the Forest Park at Numinbah Valley.

In recent years, while visitor numbers have increased and Governments are encouraging the community to become more interested and involved with our unique Australian environment, we have seen the loss of a significant number of public facilities. Unfortunately there has been no comparable increase in car parking, public toilets and camping areas.

A decade ago the Beattie Government abandoned plans to open up "The Settlement" as a multi-faceted open space public facility to lock up the majority of the 1100 acres as inaccessible National Park. Following this came the \$40,000,000 "Buy Back" scheme that saw many businesses closed down. Several of these, such as the Springbrook Manor and the "Springbrook Winery, catered for a significant number of visitors and provided off street parking for dozens of vehicles. Expectation that land purchased under this scheme would eventually benefit the public have so far failed to materialise.

Loss of recreation areas that accompanied the completion of the Hinze Dam Stage 3 resulted in further pressure on already stressed Hinterland parks and reserves.

We ask that the State Government's plan to close the Numinbah Forest Park be reversed so that this well used and popular facility can continue to be available to the public.

Kind regards

Ian Bolton

Honorary Secretary,

SPRINGBROOK MOUNTAIN COMMUNITY ASSOCIATION

PO BOX 677 MUDGEERABA QLD. 4213

email: [secretary@smcs.org.au](mailto:secretary@smcs.org.au)

Tel: 07 5533 5270

**From:** Ceris Ash <[cerma@bigpond.net.au](mailto:cerma@bigpond.net.au)>  
**Date:** 29 March 2020 at 1:58:39 pm AEST  
**To:** [thepremier@premiers.qld.gov.au](mailto:thepremier@premiers.qld.gov.au)  
**Cc:** "[environment@ministerial.qld.gov.au](mailto:environment@ministerial.qld.gov.au)" <[environment@ministerial.qld.gov.au](mailto:environment@ministerial.qld.gov.au)>  
**Subject:** Springbrook National Park Forest Park

Dear Premier,

There is a lovely little park in Numinbah Valley in the Gold Coast Hinterland on the upper reaches of the Nerang River. It is managed by Rangers from Springbrook National Park. It goes by the name of Springbrook National Park Forest Park.

The decision was made many months ago to demolish the park and stop all access to this park. No community consultation was undertaken.

This park serves the community of the Gold Coast well. It is used by PlatypusWatch, the students visiting the Numinbah Environmental Education Centre and many Gold Coast and overseas visitors. It has a lovely swimming area and a quite picnic area.

It takes pressure of the now overcrowded sections of Springbrook National Park including Natural Bridge. The population of the Gold Coast is growing very quickly and parks are becoming more vital for this growing population. All the more reason to keep this park.

Lack of money has been put forward as the reason to close this park. Springbrook National Park has ever increasing numbers of visitors and never seems to get any increase in budget. Weekends see over used picnic, toilet and parking spaces. Cars now park dangerously as there are not nearly enough spaces for the people visiting. Having another option for visitors at Forest Park is a must. Please consider funding this National Park appropriately so Forest Park can stay open.

Also mentioned as a reason to close Forest Park is the upkeep due to misuse. Unfortunately it is sometimes abused by some members of the public particularly at night time. This could easily be alleviated by a lockable gate.

The communities of both Springbrook and Numinbah Valley are very upset to see the lose of this park. It holds many memories and has historical significance for many.

Please reconsider the decision to close and demolish this beautiful park.

Catherine Ceris Ash  
President  
Springbrook Wildlife Group  
51 Bilborough Court  
Springbrook Qld 4211  
0418 454 732



**From:** Corro DES Min and DG

**Sent:** Thursday, 23 April 2020 2:32 PM

**To:** [peteanddanni2@gmail.com](mailto:peteanddanni2@gmail.com)

**Subject:** CTS No. 06249/20 - Letter from the Office of the Minister for Environment and the Great Barrier Reef, Minister for Science and Minister for the Arts

**Sensitivity:** Confidential

Good afternoon

On behalf of the Office of the Minister for Environment and the Great Barrier Reef, Minister for Science and Minister for the Arts, please find attached a letter in response to your correspondence.

Kind regards

**Executive Correspondence Unit**

Department of Environment and Science

Thank you for your email of 13 and 16 March 2020 to the Honourable Leeanne Enoch MP, Minister for Environment and the Great Barrier Reef, Minister for Science and Minister for the Arts regarding closure of the Forest Park day use area in the Numinbah section of Springbrook National Park (the National Park). The Minister has asked me to respond on her behalf.

The Department of Environment and Science (the department) is committed to providing quality visitor experiences in the National Park and in recent years, has made significant investment to upgrade and maintain visitor facilities. This includes approximately \$1.5 million upgrading visitor facilities at Gwongorella, Goomoolahra and Tallanbana picnic areas and the Springbrook Information Centre. In addition, a further \$1.7 million has been allocated for works at the Natural Bridge section and further works at Goomoolahra picnic area.

I am advised that the site has become less popular for swimming due to the expansion of the Hinze Dam downstream and changes to the watercourse after Tropical Cyclone Debbie in 2017.

The park also attracts significant anti-social behaviour which has led to the facilities being regularly vandalised, public assets stolen, and has seen illegal camping, and campfires being lit. The decision was made to remove the facilities at this location and restore the site to its natural condition, with the exception of the road infrastructure (that is, the car park and vehicle bollards). Public access to the site will remain so that visitors and the local community alike can enjoy nature and the natural amenity and tranquillity that this site has to offer.

Alternative local swimming locations in the National Park are at Pocket Road, which is 500 metres to the north, and 1.2 kilometres to the south near the Numinbah Village Community Hall. The Council of the City of Gold Coast also provides a popular swimming area at Bochow Park where picnic facilities, public toilets and large open green space are provided.

If you require any further information, please contact Mr Sergio Norambuena, Senior Ranger - Gold Coast and Hinterland, Queensland Park and Wildlife Service and Partnerships of the department on telephone (07) 5669 2014 or by email [sergio.norambuena@des.qld.gov.au](mailto:sergio.norambuena@des.qld.gov.au).

Yours sincerely

Angus Sutherland

**Senior Policy Advisor**

**Office of the Minister for Environment and the Great Barrier Reef,  
Minister for Science and Minister for the Arts**

*"I am advised that the site has become less popular for swimming due to the expansion of the Hinze Dam downstream and changes to the watercourse after Tropical Cyclone Debbie in 2017."*

To add insult to injury, well after the demolition of Forest Park, and as a long term testament to stupidity, QPWS have now erected a sign at the Goomoolahra picnic area on Springbrook Mountain clearly stating that there are swimming opportunities at Forest Park!!!



This is after the Minister stated in written responses to our complaints:- *"I am advised that the site has become less popular for swimming due to the expansion of the Hinze Dam downstream and changes to the watercourse after Tropical Cyclone Debbie in 2017."*

They also claim on the sign that there are toilets, BBQ's and picnic tables at Forest Park—despite having smashed them all to pieces with an excavator on the week starting 5<sup>th</sup> May.

This lot appear to be out of control with no communication at all—maybe they were in such a rush to demolish Forest Park nobody remembered to change the signage at Goomoolahra?







President: Peter Yaun 0409142255  
peteanddanni2@gmail.com

Secretary: Denice Gilbert 0427146867  
denicefg@bigpond.net.au

30<sup>th</sup> March, 2020

The Honourable Leeanne Enoch  
Minister for Environment and the Great Barrier Reef,  
Minister for Science and Minister for the Arts.

Dear Leeanne,

After perusal of your correspondence to the Honourable Ros Bates, Member for Mudgeeraba, I am extremely disturbed you have been incorrectly advised as to the true circumstances of Numinbah Forest Park and Numinbah Valley in relation to public recreational opportunities. I speak with some authority as I am a fourth generation member of my family who first came to this area in 1897.

I will endeavour to respectfully correct the anomalies in your letter. **Please take the time to read the original letter attached above.** This letter is a true perspective of the situation, unlike the advice you appear to have received.

The expansion of the Hinze Dam is addressed in the original letter to yourself and the Honourable Kate Jones. There are no opportunities to swim at the Hinze Dam. The only opportunities other than trespassing through private land in Numinbah Valley and Natural Bridge are the City of Gold Coast owned Bochow Park and Forest Park.

There are no swimming opportunities or picnic areas adjacent to Pocket Road. This area is National Park with prohibited access and definitely no recreational opportunities whatsoever. The river is also inaccessible due to the dangerous high banks and thick undergrowth. Swimming is also prohibited at Natural Bridge National Park.

I am concerned your statements that Pocket Road and the Numinbah Valley Community Hall are opportunities for public recreation including swimming may set a dangerous precedent with the possibility of legal action if someone is hurt heeding your advice.

The Numinbah Valley community hall does have council owned toilet amenities adjacent to the main building but once again the river here is also inaccessible due to the dangerous high banks and thick undergrowth. Bush walkers who park here now to traverse the Great Walks track are discouraged as they park out the only community meeting place in the districts of Numinbah Valley and Natural Bridge and compromise community events and fundraisers that are an integral part of the local school P and C, the local Hall Committee (the hall is owned and maintained by the community) and also the Rural Fire Brigade.

Once again as mentioned in my original correspondence, Bochow Park and nearby Springbrook National Parks are saturated by too many visitors already. Both Bochow Park and Numinbah Forest Park are so popular during the summer months that cars are often

dangerously parked on the road verges. Residents on Springbrook are very angry at being parked out every weekend by visitors.

Once again the assertion that Cyclone Debbie altered the watercourse and made the area unpopular is completely false. The river is still a safe pristine area very popular for families to cool off on a hot summers day.

Ultimately our district desperately needs Forest Park to remain open. Some improvements would also be welcome.

I take this opportunity to issue an invitation to yourself to meet some respectful community members who will happily demonstrate that the unfortunate advice you received is totally incorrect.

Sincerely yours,

Peter Yaun  
President  
Communities for Sustainable Futures  
McPherson Ranges Group Inc.

### **Summary of phone call to QPWS office**

Peter Yaun again phoned Sergio Norambuena at 2.51pm, 1<sup>st</sup> May. A 16-minute conversation ensued in which a request to meet community representatives again was declined. Sergio also refused to delay the demolition stating that a demolition contract had already been signed and would proceed.

He indicated they would make a concession for community benefit and leave the track into Forest Park open.

Peter also phoned the National Parks office on Springbrook on Friday 1<sup>st</sup> May and spoke to Peter Mannering, the acting Ranger in Charge. He also refused to assist in halting demolition or delaying until we could be heard.



President: Peter Yaun 0409142255  
peteanddanni2@gmail.com

Secretary: Denice Gilbert 0427146867  
denicefg@bigpond.net.au

1<sup>st</sup> May, 2020

Mr. Angus Sutherland,  
Senior Policy Advisor,  
Office of the Minister for Environment and the Great Barrier Reef,

Dear Angus,

There are no swimming opportunities or picnic areas adjacent to Pocket Road. This area is National Park with prohibited access and definitely no recreational opportunities whatsoever. The river is also inaccessible due to the dangerous high banks and thick undergrowth. Swimming is also prohibited at Natural Bridge National Park.

I am concerned your statements that Pocket Road and the Numinbah Valley Community Hall are opportunities for public recreation including swimming may set a dangerous precedent with the possibility of legal action if someone is hurt heeding your advice.

The Numinbah Valley community hall does have council owned toilet amenities adjacent to the main building but once again the river here is also inaccessible due to the dangerous high banks and thick undergrowth. Bushwalkers who park here now to traverse the Great Walks track are discouraged as they park out the only community meeting place in the districts of Numinbah Valley and Natural Bridge and compromise community events and fundraisers that are an integral part of the local school P and C, the local Hall Committee (the hall is owned and maintained by the community) and also the Rural Fire Brigade.

Once again as mentioned in my original correspondence, Bochow Park and nearby Springbrook National Parks are saturated by too many visitors already. Both Bochow Park and Numinbah Forest Park are so popular during the summer months that cars are often dangerously parked on the road verges. Residents on Springbrook are very angry at being parked out every weekend by visitors.

Once again the assertion that Cyclone Debbie altered the watercourse and made the area unpopular is completely false. The river is still a safe pristine area very popular for families to cool off on a hot summers day.

Ultimately our district desperately needs Forest Park to remain open. Some improvements would also be welcome.

I take this opportunity to issue an invitation to yourself to meet some respectful community members who will happily demonstrate that the unfortunate advice you

received is totally incorrect  
Thank you for your consideration,

Kind regards,

Peter Yaun  
President  
Communities for Sustainable Futures  
McPherson Ranges Group Inc.

---

3 May 2020  
Angus Sutherland  
Senior Policy Advisor  
Office of the Minister for Environment and the Great Barrier Reef,  
Minister for Science and Minister for the Arts

Dear Angus,

I am very concerned after reading your response, you may not have seen the attached letter I drafted to Minister Enoch refuting some of the advice she appears to have received on the Numinbah Forest Park closure issue.

There are several statements which are demonstrably incorrect in the response. I refer mainly to the comments regarding other recreational opportunities and changes to the watercourse at Forest Park as a result of cyclone Debbie. Please take the time to peruse the first attached letter above, to Minister Enoch where this advice is absolutely refuted. I have highlighted these issues in red for your benefit.

The suggestion that there are alternative sites where similar recreational activities such as those enjoyed at Forest Park are able to be enjoyed, demonstrates the desperation to justify this diabolical decision. Not only are these sites extremely difficult to access, they are dangerous as well.

From my perspective, these suggestions may well leave the State Government liable through duty of care for any injuries sustained by people endeavouring to access these nominated recreational sites.

Obviously there has been no thought or consideration given to the fact that these sites are in close proximity to the Hinze Dam. There are no toilet amenities north of Forest Park so advocating these sites for visitors leaves them no option but to use the banks of the Nerang River as toilets. Ensuing weather events will undoubtedly wash human waste into the dam. I'm sure SEQwater will not be impressed with this scenario.

In my conversation with Sergio Norambuena on May 1<sup>st</sup> he indicated they would make a concession for community benefit and leave the track into Forest Park open. Once again, the banks would become a visitors toilet and the area would still be open for abuse by campers and vagrants leading to more anti-social behaviour. There will also be no bins on site so unfortunately with some elements of society the environment will suffer.

**The question has to be asked, why would they choose to close a perfectly good and popular park with appropriate amenities including toilets, then encourage people to expose themselves to risk, trying to access other sites that have the capacity to pollute one of the**

**major South East Qld water sources? Surely a gate at the entrance of the existing park would be a simple common sense measure to control undesirables from accessing the park out of hours?**

I am very concerned there appears to have been a deliberate intention to justify this poor decision by making these desperate and misleading statements. Ultimately if a proponent chooses to rely on untruths and deceit to prosecute an argument, then that argument is obviously flawed and will be proven to be false.

I am willing to respectfully meet with yourself or your representatives on site in order to address these false statements.

I communicated with Mr Sergio Norambuena on May 1<sup>st</sup> when he informed me that demolition of this park is imminent. I was able to update Sergio on initiatives the community has undertaken to enable Numinbah Forest Park to remain open in its original state. I will explain these initiatives:-

1/ I have an undertaking from the Numinbah Correctional Centre that subject to approval from the Centres Community Advisory Committee, Numinbah Forest Park could be included on the list of community assistance sites. I have been a member of this committee for over 20 years and have chaired it for the last 15 years. You may not be aware the NCC historically has already assisted in maintaining this site before the transition from State Forest to National Park as a result of the then Regional Forest Agreement.

This initiative has the potential to save National Parks considerable funding, which I am led to believe, is the reason the decision has been undertaken to close the park.

2/ Any alleged vandalism and anti-social behaviour could be eliminated with the installation of a gate at the front entrance to the park. This gate could be locked each afternoon and unlocked each morning by the same person who is already tasked with the gates at the Hinze Dam western boat ramp and also the City of Gold Coast owned Bochow Park which is sited some kilometres south of Numinbah Forest Park.

3/ This park was built in 1978 by dedicated State Forestry employees who sourced stone and timber from the surrounding district to hand construct the shelter shed and toilet facilities. The buildings were constructed with great skill using this stone, mortar and timber and the wonderful condition these buildings are in 42 later is testament to their skill and dedication.

We, the community, are in the process of applying for heritage listing for this site in its entirety. The community will consider any damage done to this site as sheer ignorance and vandalism. There also remains a question regarding the legality of removing material from a National Park site?

Other community concerns:-

The Numinbah Valley and Springbrook Rural Fire Brigades by rough estimation fight approximately 90% of their fire callouts on state government tenure, mainly National Parks. Only as recently as last year, these brigades assisted National Parks personnel working alongside them in a purely unpaid voluntary capacity for approximately 1 week in August and 2 weeks in September fighting to control fires close to Binna Burra. This is now a great relationship based on respect and comradery, unprecedented over the years.

Many residents also work with National Parks through the Gold Coast Hinterland Pest Management Group where together with other government agencies, work in a voluntary capacity to control both flora and fauna pests. These relationships are forged out of respect and also the common goal to improve the environment and the natural amenity of the hinterland.

I have a concern that if this park is taken away from this community there may be some resentment and lack of motivation from these volunteer residents who freely give their time, often at great expense to themselves, their families and district.

To have not even been accorded the respect to engage the community in a formal consultation prior to a decision of this magnitude is no less than the proverbial “kick in the guts” from a disrespectful and unappreciative bureaucracy who should stand condemned.

You may not be aware the nearby communities have an initiated a petition where at the time of writing this document, 1435 people so far have already registered their dismay at this decision. The link to this petition is :- <http://chng.it/Zm2hCp2m>

It is interesting to note that many of these people live in electorates other than Mudgeeraba and they are so passionate and upset they are very willing, with the power of social media, to make this an October election issue in their respective electorates. Residents in rural communities, particularly long term residents, take enormous pride in their history, heritage and community infrastructure assets so are very determined that this park will not be demolished.

It is apparent decision makers in this instance have seriously underestimated the popularity of this park and the determination of both residents and other patrons to ensure this park remains intact and accessible in its entirety.

Community members have vowed to rally at the site if any demolition work commences and appropriate media releases will be commissioned accordingly.

Sincerely yours,

Peter Yaun  
President  
Communities for Sustainable Futures  
McPherson Ranges Group Inc.





President: Peter Yaun 0409142255  
peteanddanni2@gmail.com

Secretary: Denice Gilbert 0427146867  
denicefg@bigpond.net.au

**Re Numinbah Forest Park:**

11<sup>th</sup> May 2020

The Premier of Queensland,  
The Hon. Anastasia Palaszczuk,

The Hon. Leeanne Enoch,  
Minister for Environment and the Great Barrier Reef

Mr. Angus Sutherland,  
Senior Policy Advisor,  
Office of the Minister for Environment and the Great Barrier Reef,

Serge Norambuena,  
DES Queensland,

Miles Pritchett,  
Head Ranger, Springbrook National Park,

On behalf of the effected community members I make reference to the attached photograph of a National Parks sign standing at the entrance to what was a much-loved community asset. This sign is a sad epitaph and standing testament to hypocritical atrocity. A deliberate malicious act that demolished a much-loved community asset and our cultural heritage.

This act has destroyed an unprecedented co-operative relationship built out of the common goals of community safety from natural disaster emergencies along with pride in, and care of, our land and environment.

The instigators and purveyors of this atrocity, together with their masters-in-government will stand condemned by our local and wider communities of South East Queensland.

Collectively this broad community anger and disgust has resulted to date, in over 3,207 petition signatures and 1033 shares, over 2000 signatures just in the last week.

How many signatures will be accrued by October?

We find this sign hypocritical and offensive in respect to this government's sanctioned vandalism.

**Please remove it!**

Sincerely yours,  
Peter Yaun.  
President  
Communities for Sustainable Futures  
McPherson Range Group Inc.

# National park

This park protects our natural and cultural heritage.

Everything in this park is protected under the *Nature Conservation Act 1992* with penalties for offences.



 Queensland Government  
Department of Environment and Science  
Queensland, Australia



**From:** Erica M Bates <[ebsportz@bigpond.com](mailto:ebsportz@bigpond.com)>  
**Sent:** Tuesday, 26 May 2020 10:28 AM  
**To:** [peteanddanni2@gmail.com](mailto:peteanddanni2@gmail.com)  
**Subject:** Fwd: CTS No. 09427/20 - Letter from the Office of the Minister for Environment and the Great Barrier Reef, Minister for Science and Minister for the Art

This is what I got back yesterday and my friend Lea got the exact same letter.

Did you guys get another one ?

Erica Bates

“Just Be It”

Numinbah Valley

0417720352

Sent from my iPhone

Begin forwarded message:

**From:** Corro DES Min and DG <[DESMinandDG.Corro@des.qld.gov.au](mailto:DESMinandDG.Corro@des.qld.gov.au)>  
**Date:** 25 May 2020 at 12:12:50 pm AEST  
**To:** "[ebsportz@bigpond.com](mailto:ebsportz@bigpond.com)" <[ebsportz@bigpond.com](mailto:ebsportz@bigpond.com)>  
**Subject:** CTS No. 09427/20 - Letter from the Office of the Minister for Environment and the Great Barrier Reef, Minister for Science and Minister for the Arts

Good afternoon

On behalf of the Office of the Minister for Environment and the Great Barrier Reef, Minister for Science and Minister for the Arts, please find attached a letter[in response to your correspondence.

Kind regards

**Executive Correspondence Unit**

Department of Environment and Science



Office of the  
Minister for Environment and the Great Barrier Reef,  
Minister for Science and Minister for the Arts

Our Ref. CTS 09427/20

25 May 2020

1 William Street Brisbane Qld 4000  
GPO Box 5078 Brisbane  
Queensland 4001 Australia  
Telephone +61 7 3719 7140  
Email [environment@ministenal.qld.gov.au](mailto:environment@ministenal.qld.gov.au)

Ms Erica Bates  
[ebsportz@bigpond.com](mailto:ebsportz@bigpond.com)

Dear Ms Bates

Thank you for your email of 5 May 2020 to the Honourable Leeanne Enoch MP, Minister for Environment and the Great Barrier Reef, Minister for Science and Minister for the Arts regarding closure of the Forest Park day use area in the Numinbah section of Springbrook National Park (the National Park). The Minister has asked me to respond on her behalf.

The Department of Environment and Science (the department) is committed to providing quality visitor experiences in the National Park. In recent years more than \$3 million has been invested in upgrading and maintaining visitor facilities in Springbrook Nation Park including facilities at Gwongorella, Goomoolahra and Tallanbana picnic areas and the Springbrook Information Centre.

Unfortunately, it is well known that the facilities at the Numinbah Forest Park have, for some time, been the target of vandals and a hotspot for antisocial behaviour. Along with illegal camping and fires, rangers are consistently responding to the damage and theft of public assets. In recent times this has included the theft of a picnic table, two water pumps and copper plumbing from the toilet block, as well as damage to the toilet and hand basin fixtures. This vandalism and theft have come at a cost of many thousands of dollars.

The removal of the facilities at this location and the decision to restore the site to its natural condition has been carefully considered. Public access to Forest Park will remain so that visitors and the local community can continue to enjoy nature, swimming and the site's natural amenity and tranquillity. This will include the road infrastructure together with car park and vehicle bollards.

Swimming access is also provided at the Council of the City of Gold Coast's Bochow Park where picnic facilities, including a toilet, are provided.

If you require any further information, please contact Mr Sergio Norambuena, Senior Ranger - Gold Coast and Hinterland, Queensland Park and Wildlife Service and Partnerships of the department on telephone (07) 5669 2014 or by email [sergio.norambuena@des.qld.gov.au](mailto:sergio.norambuena@des.qld.gov.au).

Yours sincerely

Angus Sutherland  
Senior Policy Advisor  
Office of the Minister for Environment and the Great Barrier Reef,  
Minister for Science and Minister for the Arts

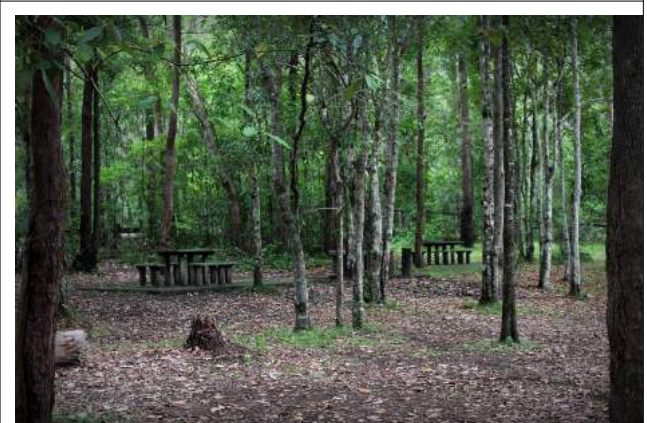
Numinbah Forest Park Photo Gallery  
April 2020 to July 2020



Numinbah Forest Park Gallery April 2020 to July 2020  
Page 2

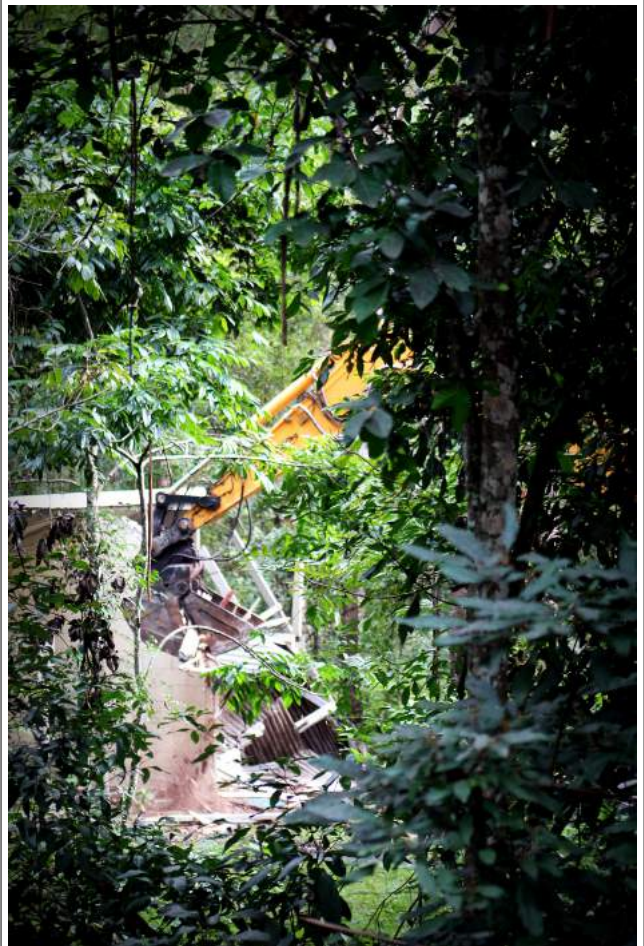
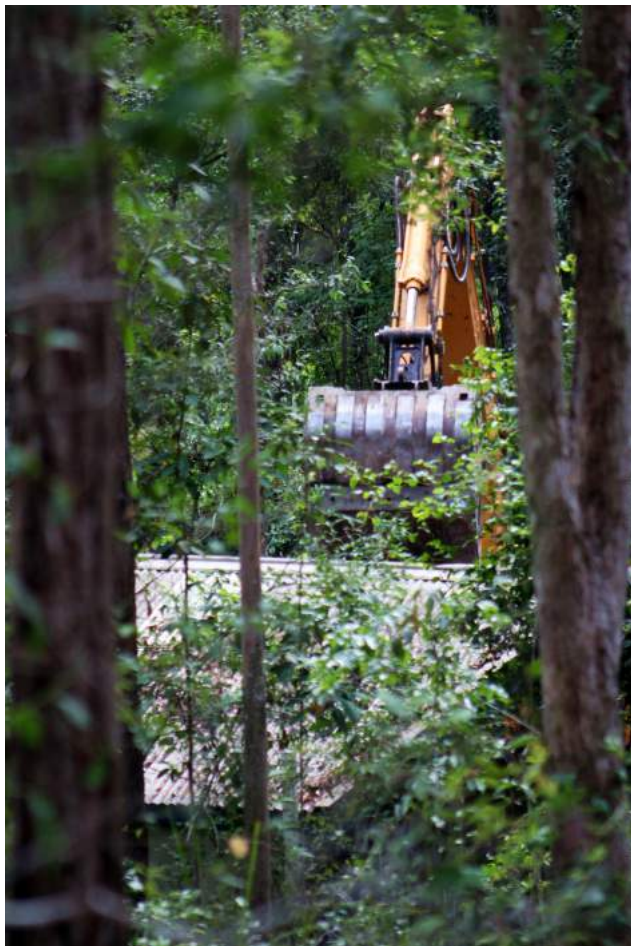
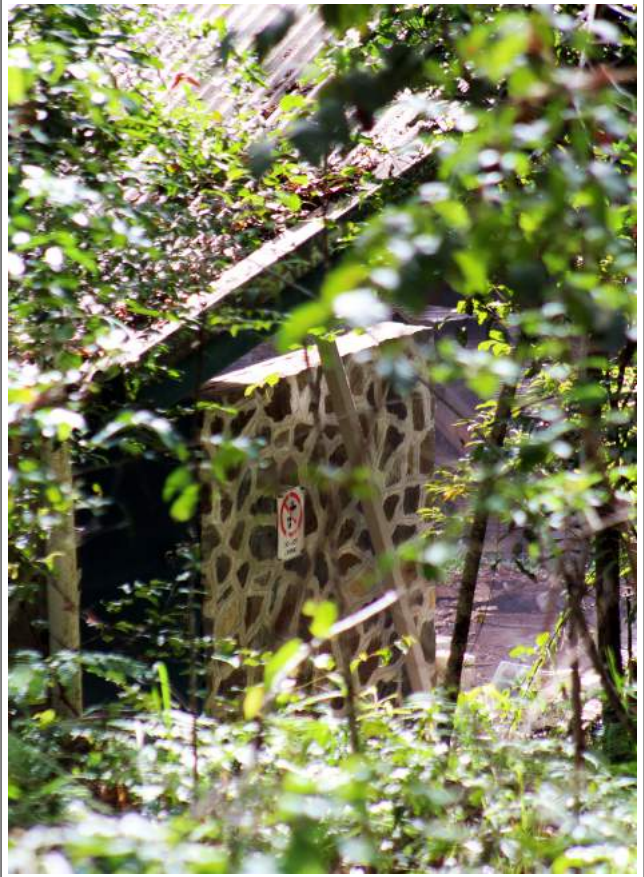


Numinbah Forest Park Gallery April 2020 to July 2020  
Page 3



Numinbah Forest Park Gallery April 2020 to July 2020  
Page 4



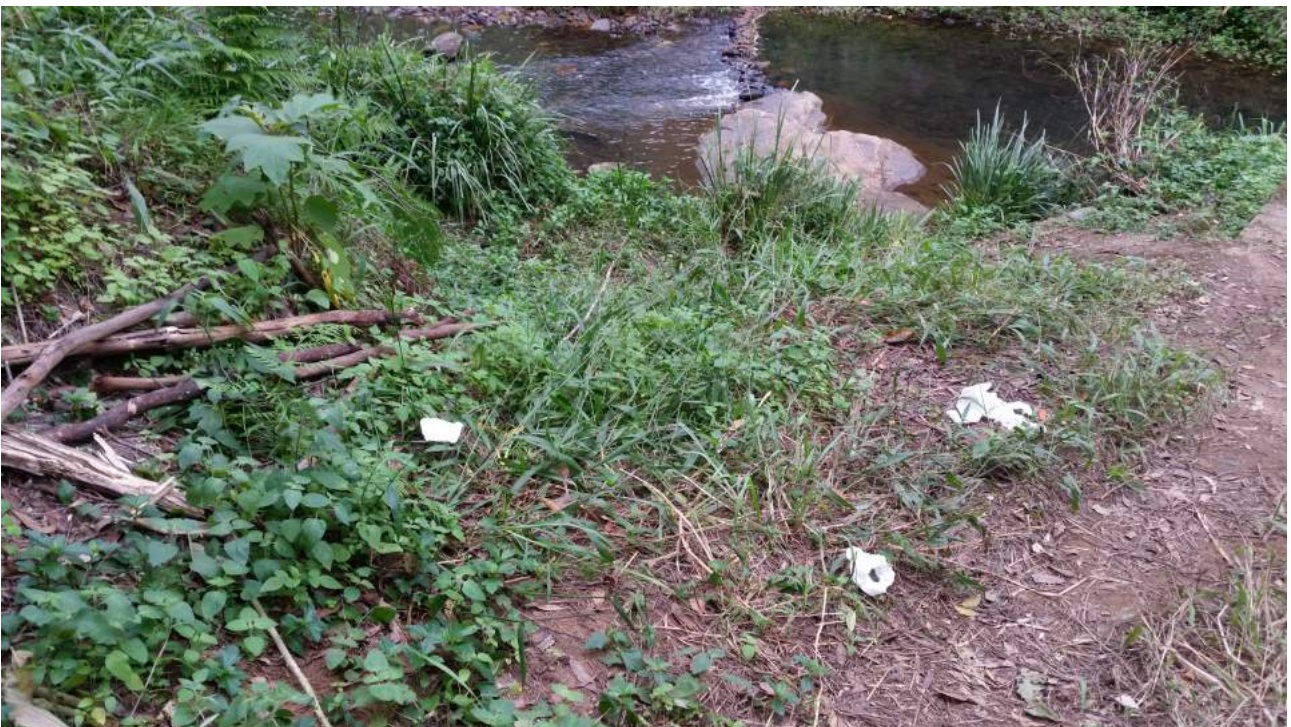


Numinbah Forest Park photo gallery April 2020 to July 2020  
Page 6





**Numinbah Forest Park photo gallery**  
**April 2020 – July 2020 Page 7**



# Numinbah Forest Park Photo Gallery

## April 2020 to July 2020 Page 8

